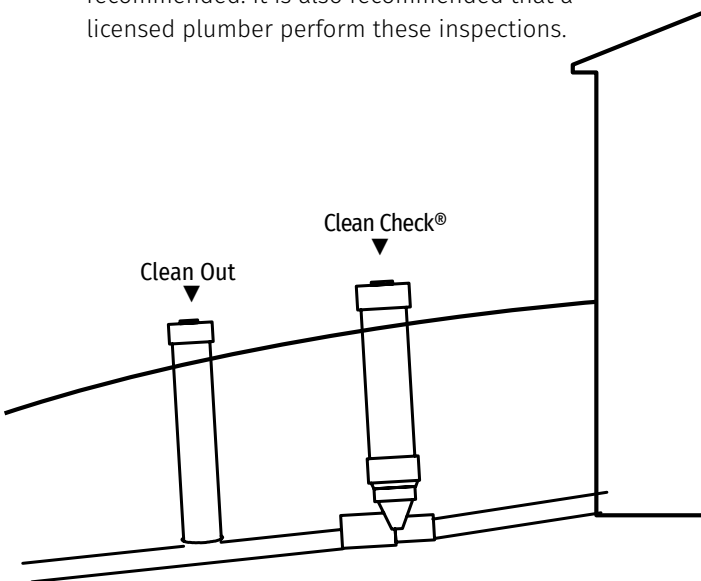
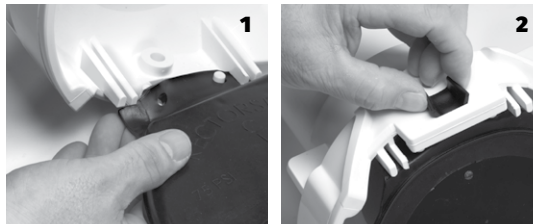


Your property is now protected from sewage backups by a Clean Check® extendable backwater valve.

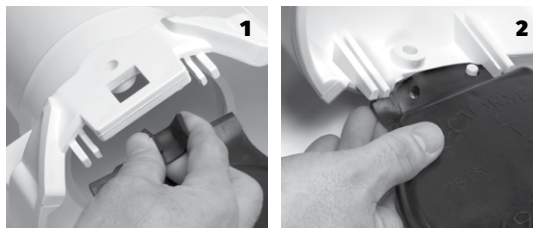
With appropriate maintenance, this valve will protect your property from sewer backups due to system overloads, block-ages and flooding. It is your responsibility to have this valve checked periodically to insure that it is operating properly. Under normal installation and use, a three month inspection interval is recommended. It is also recommended that a licensed plumber perform these inspections.



6" CLEAN CHECK Flapper replacement instructions:



Remove flapper: 1. Stretch and pull the base of the rubber flapper from under the slots on each side of collar. Pull punch holes off of pegs in collar.
2. Pinch edges of flapper lock and push out of collar mount.



Replace flapper: 1. Pinch edges of flapper lock and push through collar mount.
2. Stretch and secure rubber flapper base around and under slots on each side of collar. Pull punch holes in flapper base over pegs in collar to secure.

Replacement flappers are available from your local plumbing contractor or wholesale supplier.

Part No. 96983 (6" flapper)

RectorSeal® 2601 Spenwick Drive, Houston, TX 77055
800-231-3345 rectorseal.com



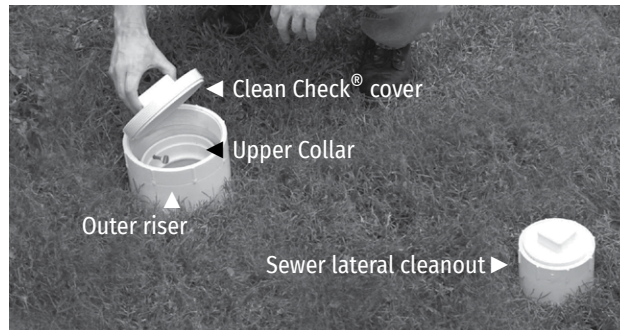
6"

Extendable Backwater Valve
Maintenance Guide



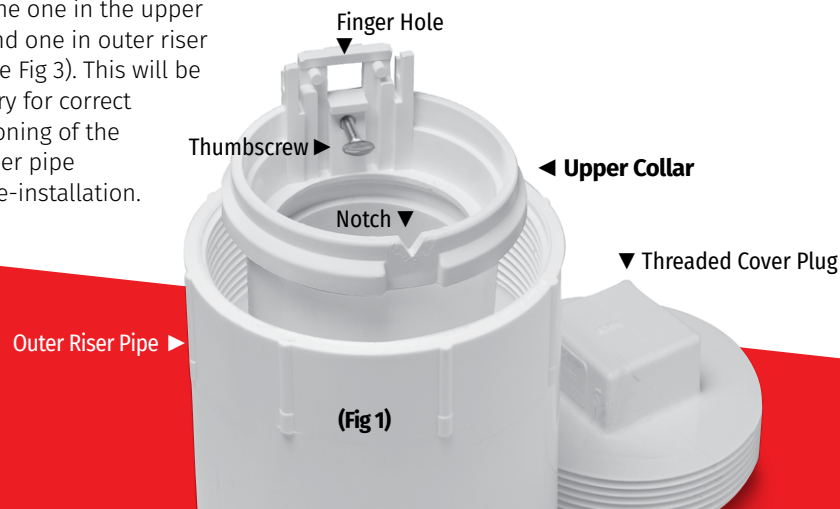
Maintenance Procedure

NOTE: Harmful bacteria are present in sewer lines. We recommend that you contact your local health district for proper sanitary precautions.



The following steps will guide your plumber through a proper inspection of your Clean Check® Extendable Backwater Valve.

- 1 Locate the Clean Check® cover. It has been placed outside your building, between the sewer lateral cleanout and the building.
- 2 Remove the threaded cover plug by unscrewing it to expose the upper collar of the inner riser assembly.
- 3 Loosen, but do not remove, the stainless steel thumbscrew located inside the upper collar.
- 4 Note the locations of the thumbscrew and opposing notch. There are two notches: one in the one in the upper collar and one in outer riser pipe (See Fig 3). This will be necessary for correct repositioning of the inner riser pipe during re-installation.



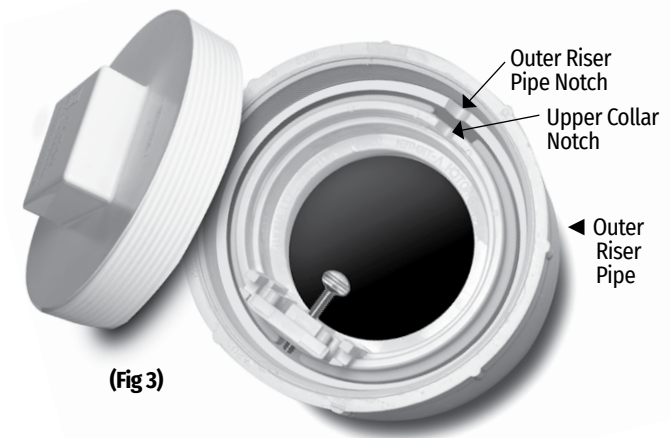
- 5 Using the finger hole provided above the thumbscrew of the upper collar, extract the inner riser assembly from the outer riser pipe and place it on the ground.
- 6 Clean debris from the flapper, inner riser assembly, as well as the in ground valve body.
- 7 Inspect the flapper for deterioration or damage caused by the harsh environment in which it operates. If deterioration is present, replace the flapper. (See back for replacement instructions and flapper part number)

For additional availability, contact:
RectorSeal®
Customer Service at
800-231-3345
for a local source.



- 8 The Clean Check® Extendable Backwater Valve is designed for easy re-installation. To properly re-seat the valve, slowly lower the inner assembly back into the outer riser pipe and rotate it until you feel the unit drop into place. The notch in the upper collar should now be lined up with the notch in the outer riser pipe.

Important: Correct alignment of the notch in the upper collar and the notch in the outer riser pipe is necessary for correct repositioning of the inner assembly.



- 9 After seating the inner riser assembly properly, hand tighten the thumbscrew until it re-seats against the inside wall of the outer riser pipe. Be certain the thumbscrew is NOT resting on the top of the larger outer riser pipe. The flat side of the flapper should be resting, in the closed position, on the building side of the valve body.
- 10 Replace the threaded cover plug.